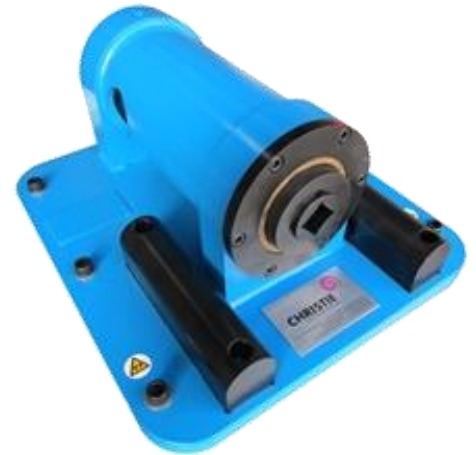


Rundown Fixtures

The W. Christie Horizontal Rundown Fixture is designed to simulate the working conditions of a screwed or bolted joint. Supplied with a static transducer and used in conjunction with a Torque Display Unit, the fixture is used for the testing and calibration of non-impacting power tools.



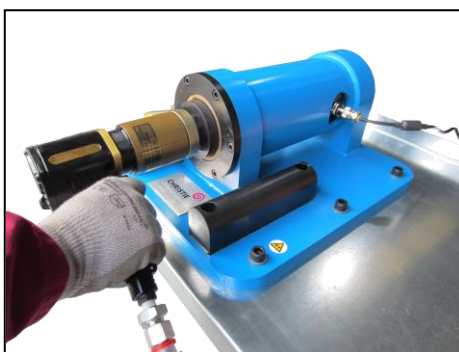
Rundown Fixture as part of a bench mounted system

W. Christie Rundown Fixtures



Torque Display Unit
(available at additional cost)

- Steel construction housing
- Integral reaction points
- 1,000, 2,500 and 5,000 Nm static transducer models classified to BS7882:1997 and accurate to +/- 0.5%
- 1,000 Nm (1" sq. drive), 2,500 Nm and 5,000 Nm (1.1/2" sq. drive)
- Supplied with transducer calibration certificate, traceable to National Standards
- Transducer cable to link to Torque Display unit



Testing a C-RAD
Pneumatic Torque Tool



Testing a LOW Series Hydraulic
Torque Tool

No statement or data within this literature is warranted or guaranteed to be accurate.

W. CHRISTIE (INDUSTRIAL) LTD

CHRISTIE HOUSE, MEADOWBANK ROAD,
ROTHERHAM, SOUTH YORKSHIRE, S61 2NF UK
T: +44(0)1709 550088 F: +44(0)1709 550030
E: INFO@WCHRISTIE.COM

Ref: HRF 03/15

www.wchristie.com